

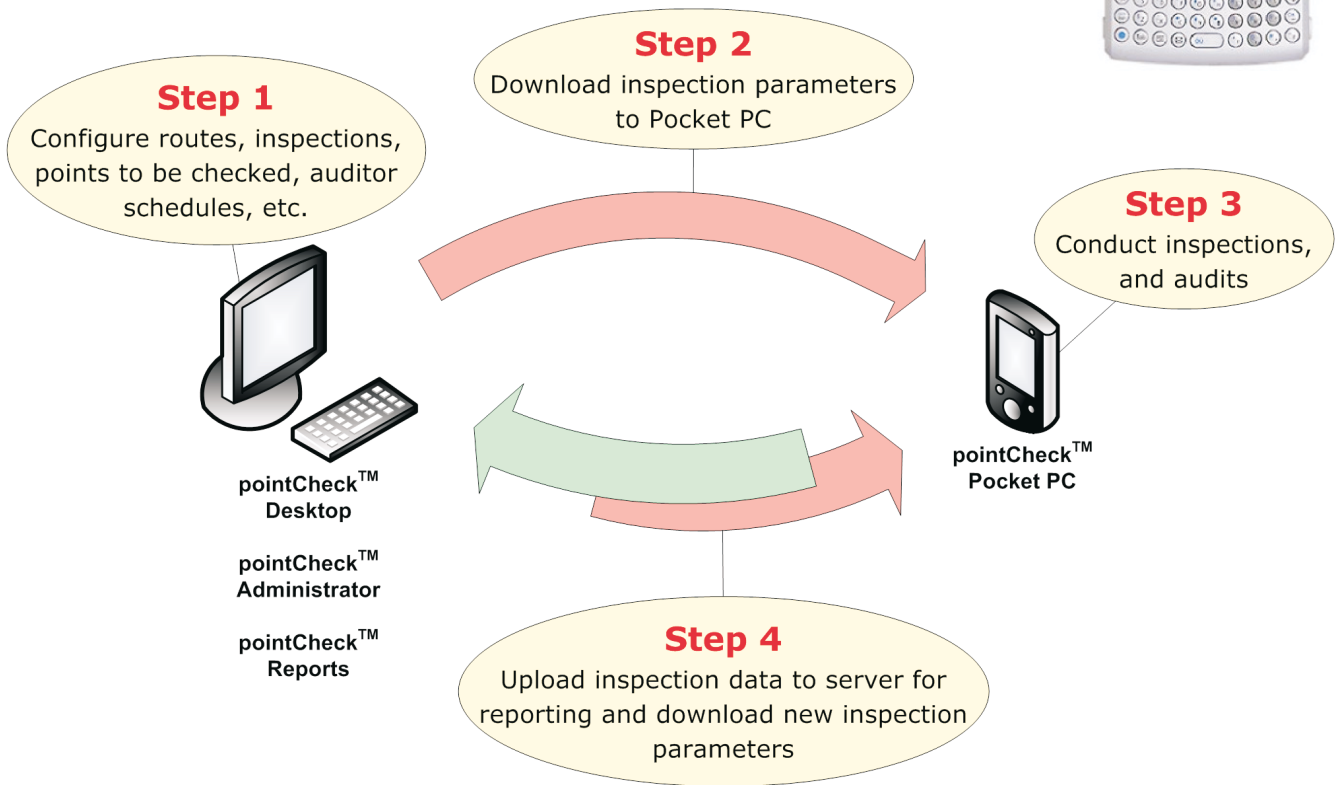


pointCheck™ PocketPC   pointCheck™ Smartphone   pointCheck™ Desktop   pointCheck™ Administrator   pointCheck™ Reports   pointCheck™ Webservice

## Inspections, Audits, and Maintenance Tracking

Increase efficiency and productivity, improve results, cut down costs, and enhance tracking and reporting.

**pointCheck™** transforms your paper-based audits, inspections, and maintenance tracking programs into truly mobile and fully automated systems, in 4 easy steps:

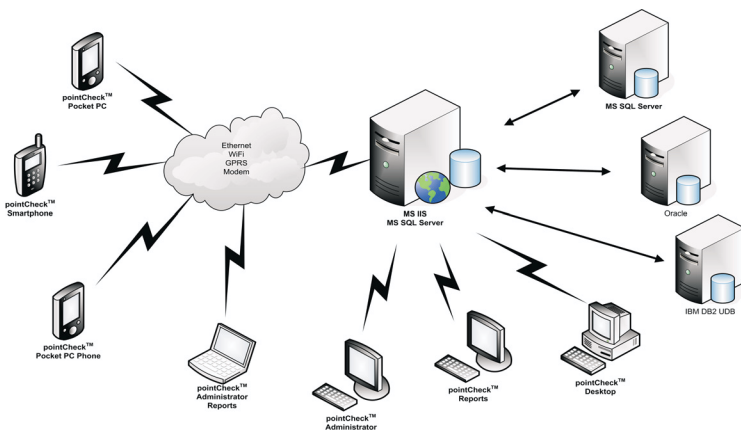


**Start using pointCheck™ on your favorite Pocket PC and realize an instant return on investment!**

- ✓ Save time
- ✓ Maximize mobility
- ✓ Increase productivity
- ✓ Increase field time
- ✓ Cut down costs
- ✓ Eliminate data entry
- ✓ Eliminate paper checklists
- ✓ Prove compliance

# Reporting and statistical analysis using pointCheck™

- ✓ Deficiencies
- ✓ Completed inspection summaries
- ✓ Internal assessment summaries
- ✓ Individual inspections
- ✓ Overdue inspections
- ✓ Deficiency trends
- ✓ Work orders
- ✓ And many more reports, either predefined, or ones you can create using **pointCheck™ Reports** or any other reporting tool



Set up a system as simple or as complex as you need.

Start with one Desktop PC and one Pocket PC™, and scale to clustered database servers, multiple mobile devices, with local network, WiFi, and GPRS connections, as well as interfaces to your ERP or other back-end systems, without bringing the system down even for one minute.

## Add-on modules

### pointCheck™ PocketPC pointCheck™ Smartphone

- Alerts
- Auto/Scheduled Synchronization
- Multiuser
- Online database access
- Socket barcode scanner
- Symbol barcode scanner
- Barcode scanner tester
- Barcode scanner elimination
- Notifications
- Multimedia capture
- GPS tracking

## Available languages

### pointCheck™ PocketPC pointCheck™ Smartphone

- English
- Croatian
- Dutch
- French
- German
- Greek
- Italian
- Portuguese
- Romanian
- Serbian
- Spanish

## FOR MORE INFORMATION

To access all the latest information about **pointCheck™** and discover more ways to mobilize your work environment call +30-211-1003002, or visit <http://pointCheck.net>.

## System Requirements

### pointCheck™ PocketPC

- PocketPC 2000, 2002, or 2003, PocketPC 2003 Phone Edition - PocketPC 2003 or PocketPC 2003 Phone Edition recommended
- Microsoft .NET Compact Framework 1.0 or later
- Microsoft SQL Server CE 2.0 (included in installation package)
- Access to network via ActiveSync, Ethernet card, Modem, WiFi, or GPRS required
- 64MB RAM - 32MB with external memory card for storage of database supported - 128MB RAM recommended

### pointCheck™ Smartphone

- Smartphone 2003
- Access to network, via ActiveSync, WiFi, or GPRS required
- SD memory card (for storage of database) recommended

### pointCheck™ Desktop

- Windows 2000, XP
- Microsoft Access 2000 or later

### pointCheck™ Administrator

- Internet Explorer 6 or later

### pointCheck™ Reports

- Internet Explorer 6 or later

### pointCheck™ Server

- MS SQL Server 2000 SP3a or later - MSDE 2000 SP3a supported (All device CALs included)
- MS SQL Server CE 2.0 Agent
- Supports Oracle, and IBM DB2 for data storage
- IIS 5.0 or later
- ASP.NET 1.1 needed for pointCheck™ Administrator, and pointCheck™ Reports